

12
PREV
EVALS

40
YEARS
EXP

The moisture controls and non-stick surface were really useful.

Bruce Barr, DMD
Pikesville, MD

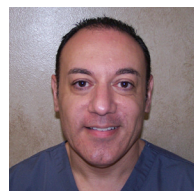


3
PREV
EVALS

44
YEARS
EXP

[I would like] better molding to tooth shape.

Garry Feldman, DDS
Burlington, MA



16
PREV
EVALS

19
YEARS
EXP

Great variety of shapes and thicknesses.

Andre Kanarki, DDS
Palmdale, CA

PINKBAND

PinkBand Matrix Starter Kit

4.4

Dental PRODUCT SHOPPER
BEST PRODUCT

The silicone-coated PinkBand provides improved moisture control and facilitates both placement and removal.

While running his practice, Dr. Robert Haraden was often troubled by the inadequacy of current dam and matrix band technology when placing composite restorations. The matrix band products he used often did not seal the prepared tooth, and the area would get contaminated with sulcular fluid and blood.

To address these problems, Dr. Haraden created a patented matrix band, the PinkBand, which contains a silicone seal to improve the placement of composite restorations. Comprised of a special blend of metals, PinkBand is a rubberized, silicone-coated matrix band that improves moisture control over standard and sectional bands, according to the manufacturer.

"[PinkBand is] very easy to place and keeps the field dry," shared Dr. Anthony Schwartz, one of the dentists who tested the bands in his practice for this *Dental Product Shopper* evaluation. Dr. Schwartz called the bands an excellent product and said he would definitely purchase the product in the future.

DPS asked our team of evaluators to use the PinkBand Matrix Starter Kit in their practices for a period of 4 weeks and share their feedback with our readers.

Ease of Use

The PinkBand Matrix Starter Kit contains a variety of 40 universal, small, and sub-gingival bands in thin and regular thicknesses. "I liked the kit," said Dr. Andre Kanarki, who thought it was somewhat better than similar systems. "It comes with a great variety of shapes and thicknesses. [The bands are] very thin and provide great contact."



"[I like that] it works well with the Tofflemire system [and it] does not stick as much to composites," noted Dr. Byron Davis, a prosthodontist. Dr. Davis, who rated PinkBand's ease of use as very good, felt that a slightly stiffer band would be ideal. Texas dentist Yahya Mansour called PinkBand an excellent product that would benefit from better packaging. In fact, based on input from the *DPS* evaluators, PinkBand has since improved the packaging.



Elizabeth Spindel, DMD;
Manchester, NH

"PINKBAND IS SO EASY TO USE, EASY TO PLACE A BAND."

Dr. Ira Biderman, a dentist who called PinkBand much better than similar products, said it is a very good product. He added that he would like to see

93%

rated overall **satisfaction** as **excellent** or **very good**.



Byron Davis, DDS;
Okatie, SC

"EASIER TO REMOVE THAN TRADITIONAL TOFFLEMIRE BANDS DUE TO THE RUBBERIZED SILICONE COATING."

it incorporated with a Garrison-type system instead of regular retainers.

Moisture Control

PinkBand's silicone coating provides an additional seal against moisture contamination. According to PinkBand, the seal provides better moisture control than with standard and sectional matrix bands.

"Moisture control and [the] nonstick surface were really useful," noted Dr. Bruce Barr, who rated moisture control as very good. Several evaluators reported that PinkBand keeps the field dry, and Dr. Michael Sicklick said having a seal at the margin was the feature he liked most. Others commented that PinkBand is very thin, provides great contact, and offers good adaptation to preps.

Ease of Placement and Removal

PinkBand's thin and flexible construction was designed to prevent its collapse during placement. In addition to maximizing moisture control, the band's silicone coating keeps composite from sticking to the band, which allows for easier removal. When asked what she liked best, Dr. Elizabeth Spindel shared, "[It's] so easy to use, easy to place a band, and composite doesn't stick to the band." She mentioned

takeaways

- Bands don't stick to composite.
- Kit is easy to use.
- Silicone coating reduces moisture.
- Kit has good variety of shapes and sizes.

the bands are very thin and flexible, and said they are fun to use.

Canadian dentist Dr. Daniel How liked that PinkBand does not stick to composite, and he also liked the thinness of the bands. Dr. Garry Feldman said he would like to see better molding to tooth shape. PinkBand now offers contoured matrix bands, but those were not available during this evaluation.

Dr. Davis, who said he is still using PinkBand a year after evaluating the kit, shared, "I really liked the ease of placing these bands for small posterior Class II composites and found them easier to remove than traditional Tofflemire bands due to the rubberized silicone coating, which prevents composite from sticking to them."

Overall Satisfaction

With evaluators calling it a great product, the entire team rated their overall satisfaction with PinkBand as excellent or very good. Most said they would purchase and recommend the bands.

When *DPS* followed up with him to find out if he continued to use PinkBand, Dr. Mansour said, "GREAT product, loving it!" Dr. Spindel, who is also still using the bands, noted, "I really liked this product, as it was easy to implement and silky smooth to place composite against. I'd give it 2 thumbs up!"

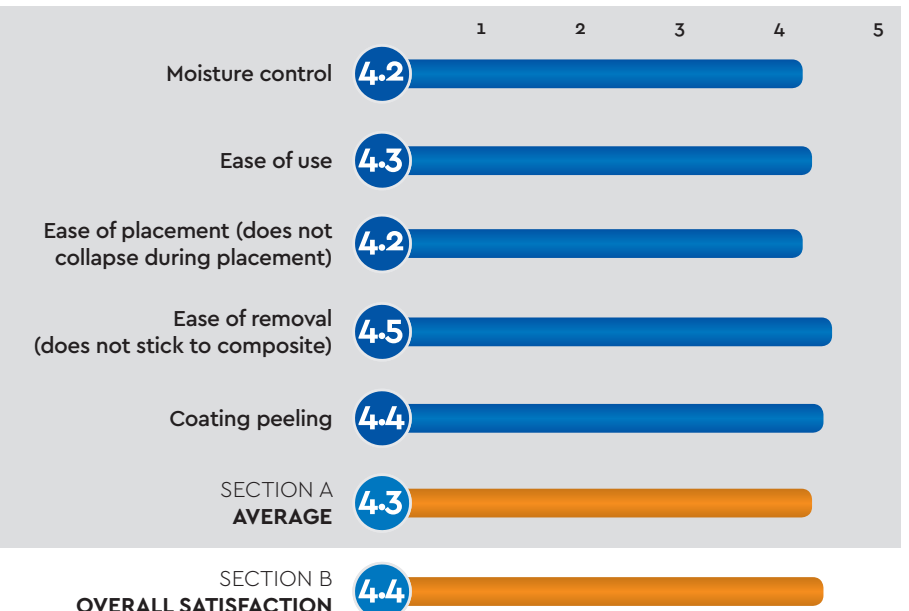


FOR FREE INFORMATION:

800.921.4806 ext. 142
www.dps.li/a/50N-225
Circle 225 on the card

PRODUCT EVALUATION SNAPSHOT

CRITERIA BASED ON AVERAGE SCORE (OUT OF 5)



PINKBAND
PINKBAND MATRIX
STARTER KIT

FINAL SCORE
AVERAGE OF SECTIONS A AND B

4.4

Dental PRODUCT SHOPPER
BEST PRODUCT